



In search of well-being and quality of life

IBV
INSTITUTO DE
BIOMECÁNICA

RESEARCH AND AGE-FRIENDLY ENVIRONMENTS

Clara Bollaín, Innovation Manager



- 
- IBV
 - OUTCOMES

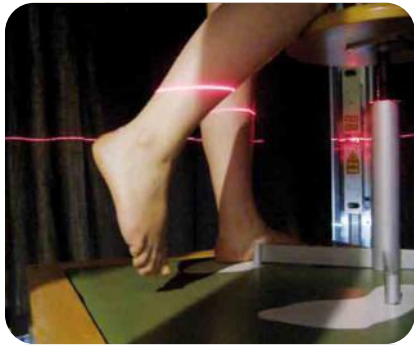


IBV



- **Instituto de Biomecánica de Valencia** (IBV- Institute of Biomechanics) is a technological centre that studies the behavior of the human body and its interaction with products, environments and services. Application to different sectors.
- A team of 200 people, with varied academic background, works on **an interdisciplinary approach**

Knowledge



Anthropometry



Technical
requirements

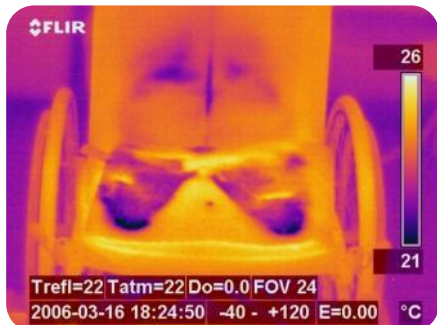


Funcionalitiy

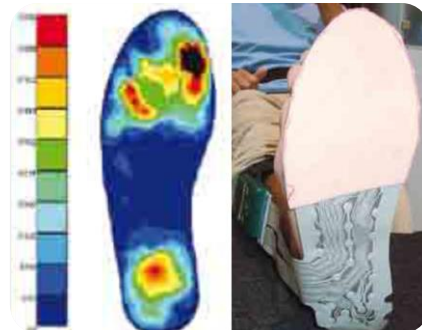


Accesibiliity
Usability

Thermal comfort



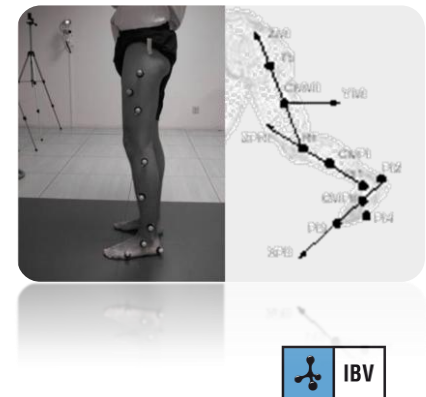
Biomechanical comfort



Ergonomy



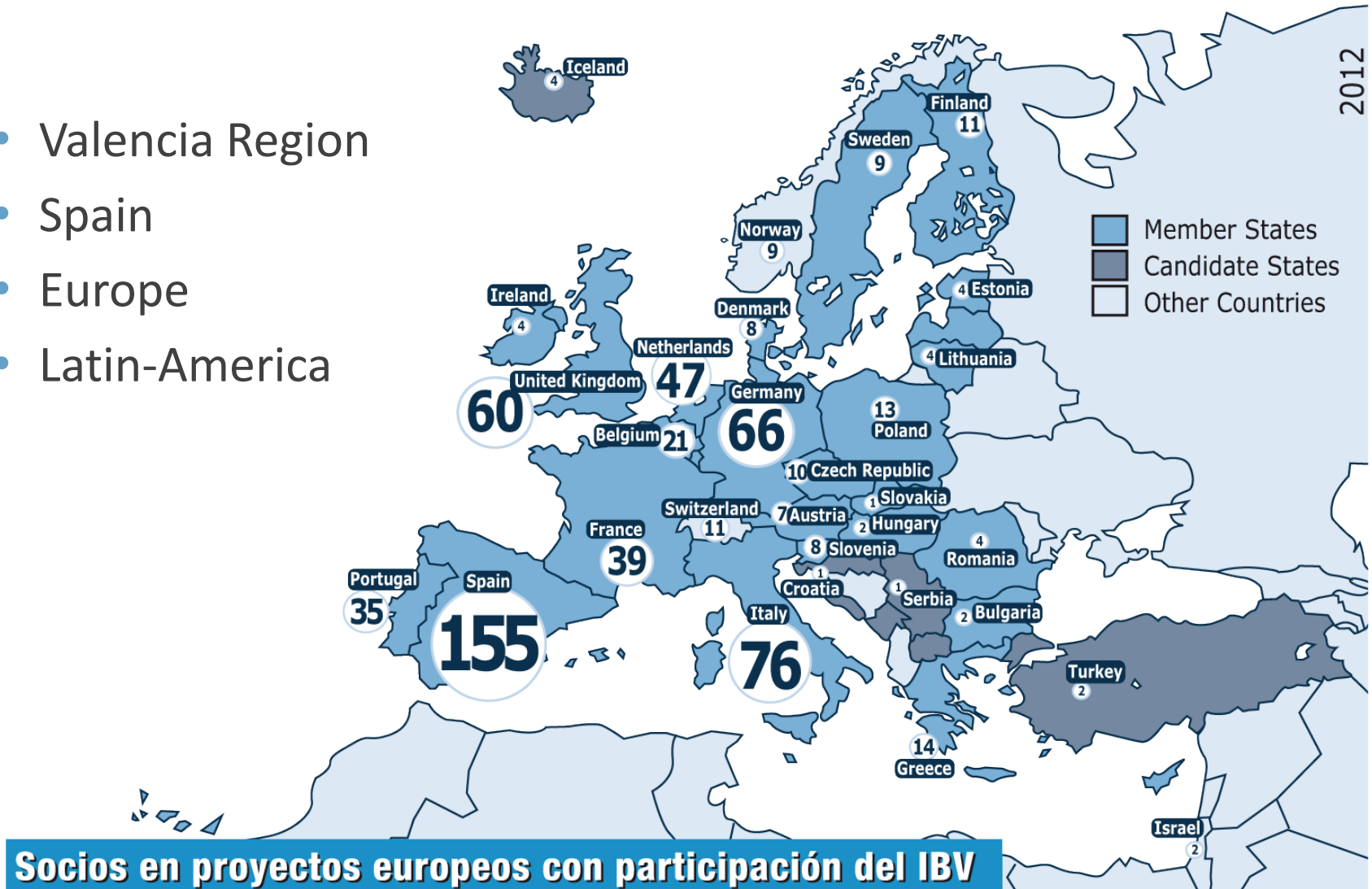
Functional evaluation



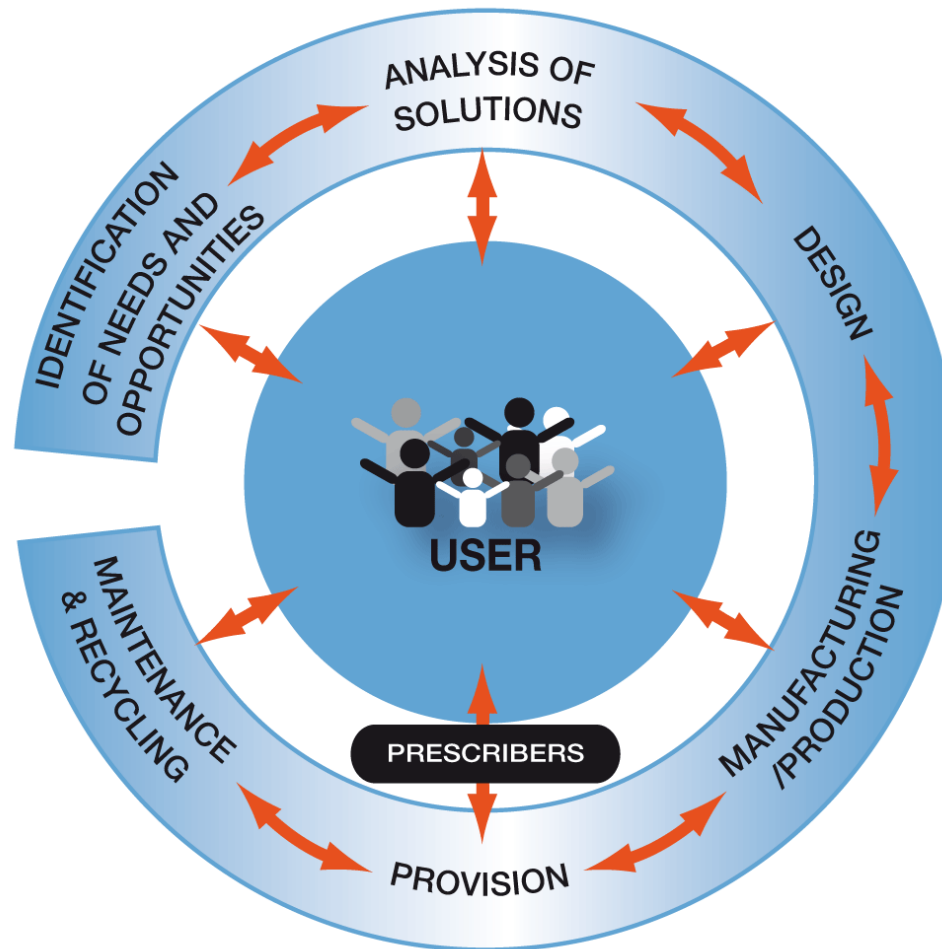
We care about your quality of life

Deployment

- Valencia Region
- Spain
- Europe
- Latin-America



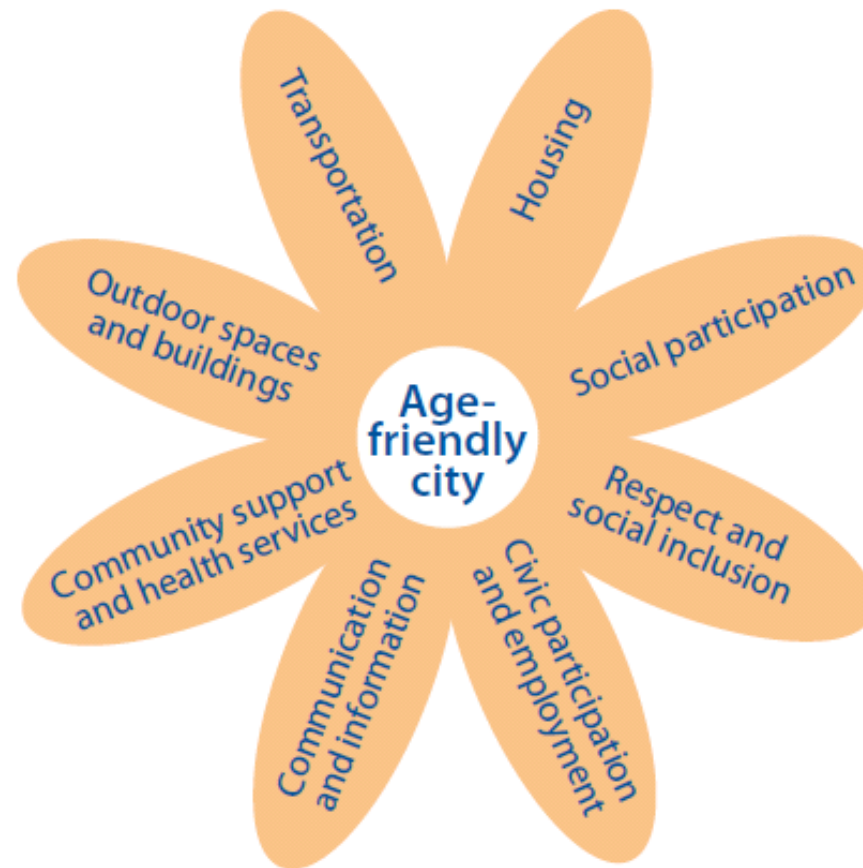
WHAT DO WE UNDERSTAND BY USER -CENTERED INNOVATION ?





OUTCOMES

AAL + AGE-FRIENDLY ENVIRONMENTS



Source: **Global Age-friendly cities: A guide**

AGEING AND LIFE COURSE, FAMILY AND COMMUNITY HEALTH



AAL + AGE-FRIENDLY ENVIRONMENTS

The challenge: Generate a new electric city car concept, with reduced weight and taking into account the needs of the user (older people)



The solution: Urban Car

AAL + AGE-FRIENDLY ENVIRONMENTS

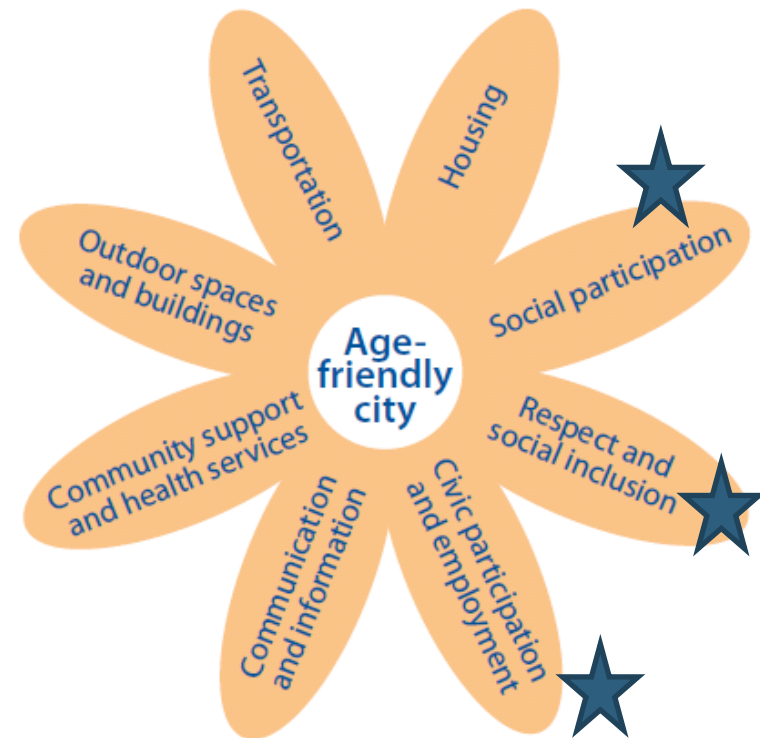
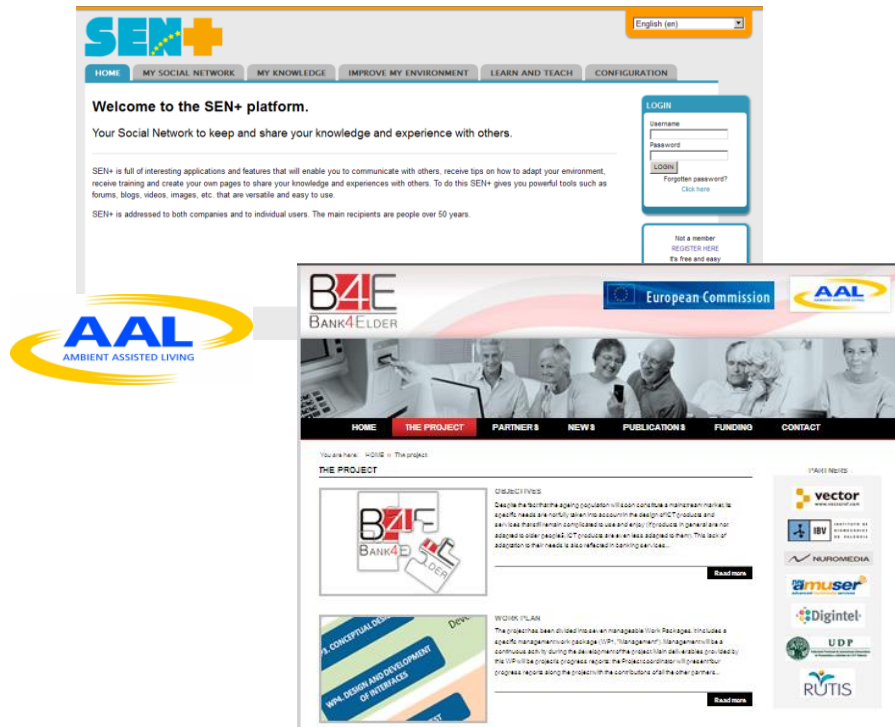
The challenge: Appropriate designs and materials



Solutions: safe pavements, AF-appliances

AAL + AGE-FRIENDLY ENVIRONMENTS

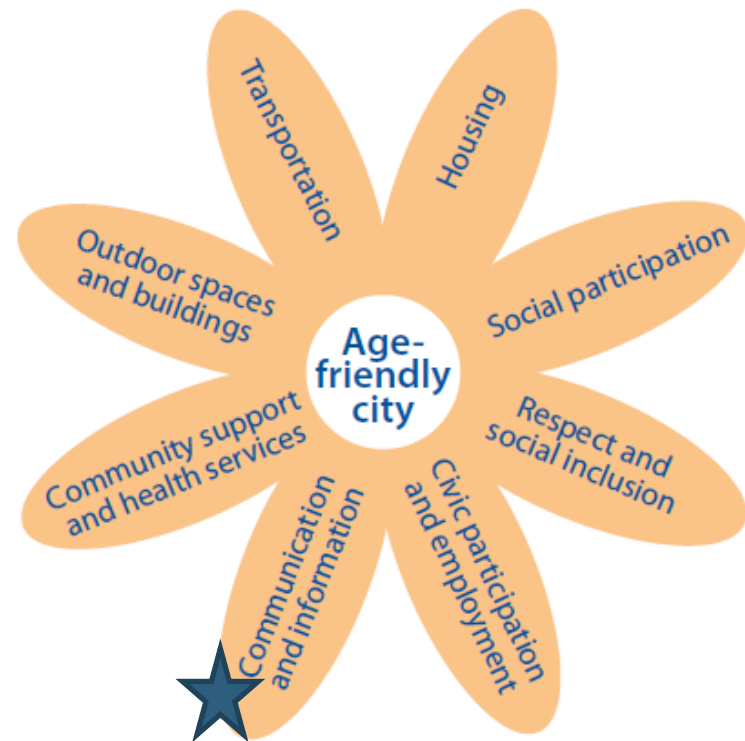
The challenge: Facilitate retirement, promote social interaction



Solutions: Social Network and a Knowledge Management system, AF-banking

AAL + AGE-FRIENDLY ENVIRONMENTS

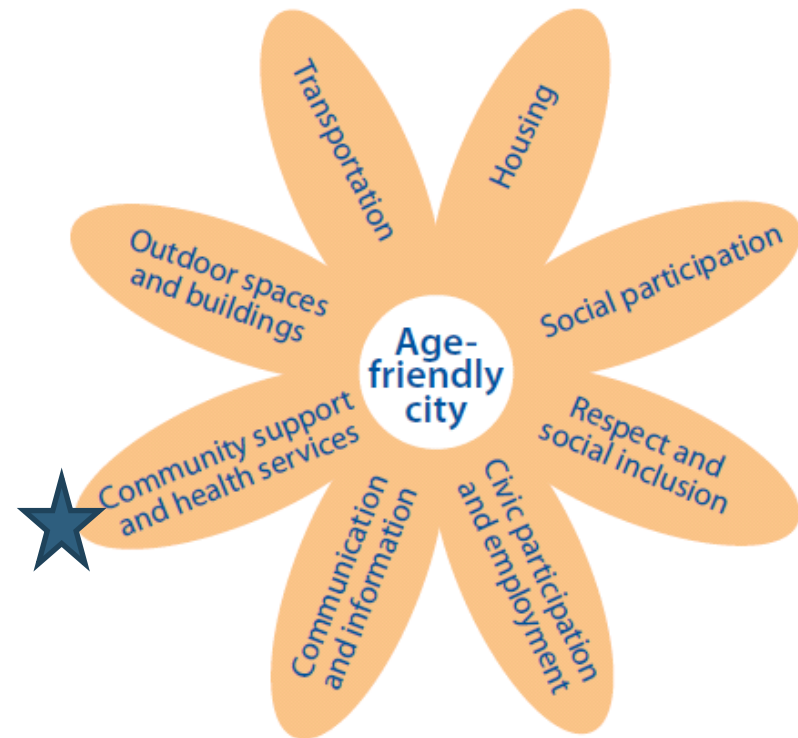
The challenge: Take into account the needs, characteristics and preferences of older people



Solutions: training for ICT purchasing, AF tablet

AAL + AGE-FRIENDLY ENVIRONMENTS

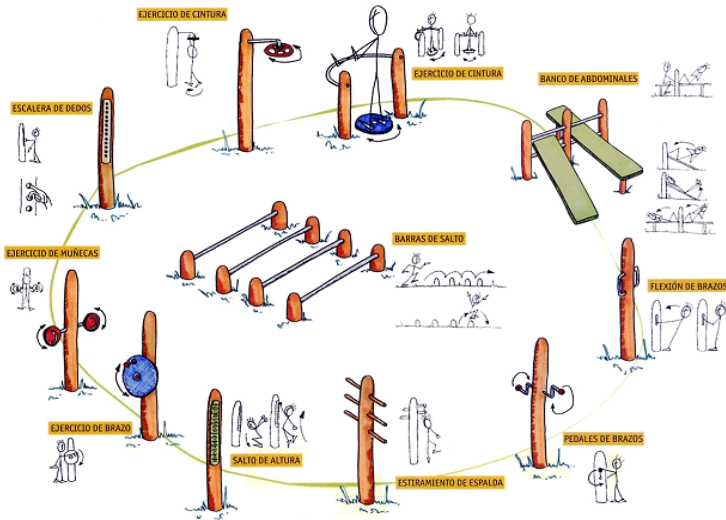
The challenge: AF-ehealth



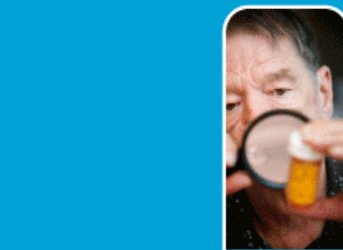
Solution: mobile+alarm (telecare)+GPS

AAL + AGE-FRIENDLY ENVIRONMENTS

The challenge: Parks with elements for older people



Solution: PARKDIFU



Si es
bueno
para
todos
es
bueno
para ti

twitter

facebook

Me gusta

A 86 personas les gusta esto.



Últimas noticias

- SIESTA, Premio Implicación Social de las Universidades Públicas Andaluzas
- Dos años de SIMPLIT
- Personas mayores serán mystery shoppers en la evaluación de servicios SIMPLIT



Una iniciativa de:



INSTITUTO DE
BIOMECAÁNICA
DE VALENCIA



UDP

Con la participación de:

AENOR

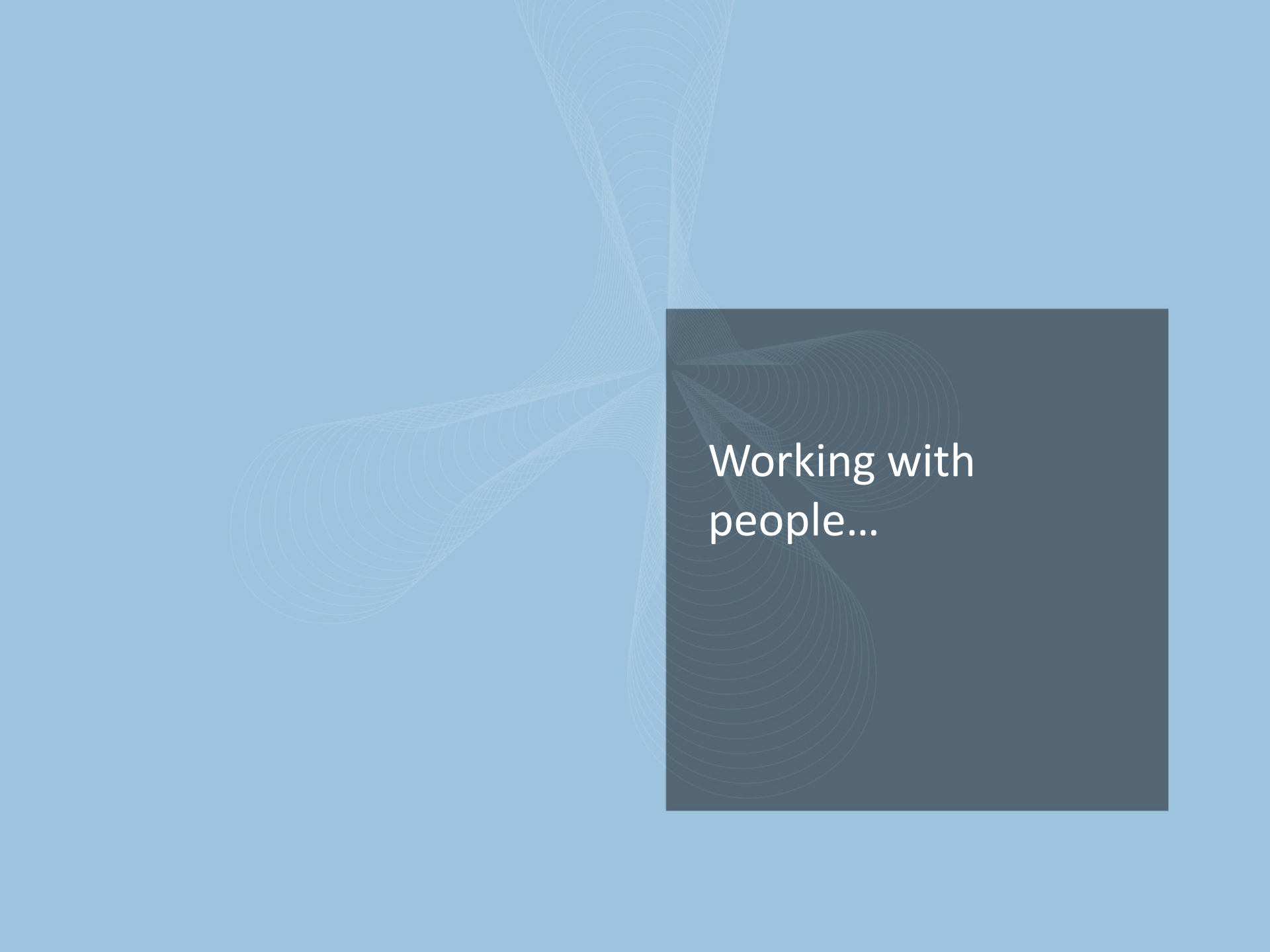
Asociación Española de
Normalización y Certificación

Con el apoyo de:



MINISTERIO
DE SANIDAD
Y POLÍTICA SOCIAL

www.simplit.es - info@simplit.es - 902 176 419

The background of the slide is a solid light blue color. Overlaid on this are several thin, light blue, wavy lines that create a sense of movement and depth. These lines are concentrated in the upper left and center areas. A large, dark blue rectangle is positioned on the right side of the slide, partially overlapping the wavy lines. Inside this rectangle, the text "Working with people..." is written in a white, sans-serif font.

Working with
people...



Working with people...

Working with people...



Thanks for your attention

Questions, comments?



clara.bollain@ibv.upv.es
rakel.poveda@ibv.upv.es